

## Supported platforms and cameras

### Server:

Check	Model
V	CT-4000/CT-4000R
V	CT-8000R/CT-8000RP

### Client:

Microsoft Windows	Windows 7, Windows 8
iMac	supported
IE	IE9, IE10, IE11
Firefox	supported

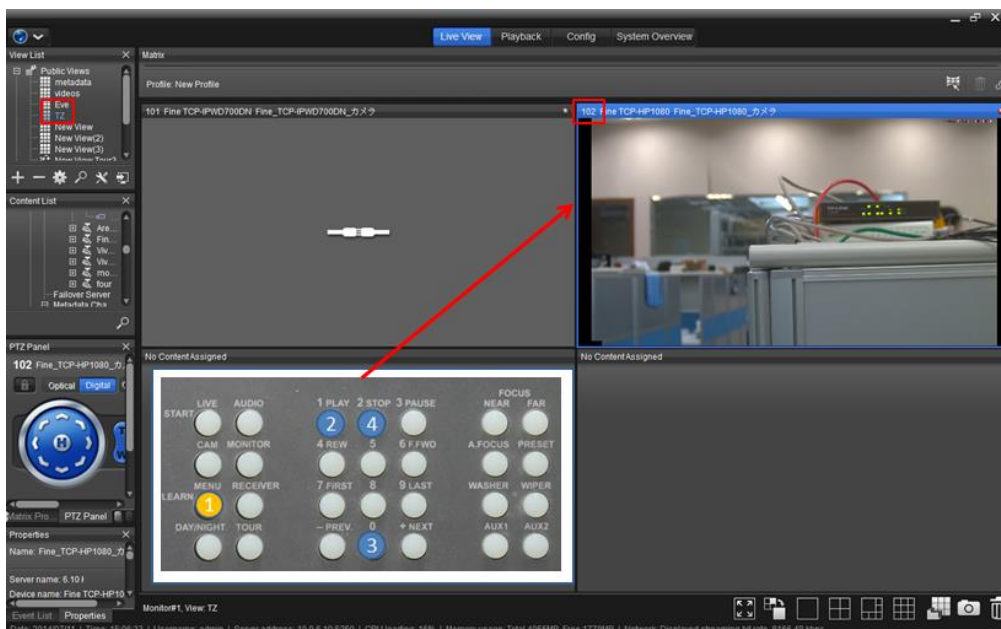
## Supported features

### 1. Combo key operations.

To enrich keyboard operation and compatible previous NuClient behavior, we support three style combo key:

- 1) This style key combination is holding the function key, then type number.
  - a) press key "Cam" and hold it.
  - b) press key "1" and release it.
  - c) press key "0" and release it.
  - d) press key "2" and release it.
  - e) release key "Cam".
  
- 2) This style key combination likes double confirmed, type the function key first, then type number, finally re-type the function key.
  - a) press key "Cam".
  - b) press key "1" and release it.
  - c) press key "0" and release it.
  - d) press key "2" and release it.
  - e) press key "Cam".

- 3) For compatible previous NuClient, which is able to set a default parameter as number, we just type the function key to trigger, however, it is confuse with another, so we need to double type.
  - a) press key “Cam”.
  - b) press key “Cam”.
2. Integration of the Videotec DCZ USB keyboard into NUUO Crystal™ version 2.1.0 with following functions:
  - a) Control camera’s PTZ motion with proportional speed when operating the physical joystick of the keyboard, or camera’s digital PTZ.
3. Key combination (“Cam” + “Grid Number”) will make the grid with “Grid Number” of the current view be focused.



In NuClient, each grid is assigned with a 3-digit “Grid Number”. The first digital is monitor number, and the following digitals are grid number.

For example, the current view has two grids with grid number as (101) and (102). Following 5 steps will make the grid (102) be focused:

- a. press key “Cam”.
- b. press key “1” and release it.
- c. press key “0” and release it.
- d. press key “2” and release it.
- e. press key “Cam”.

Grids displayed in second monitor can also be focused by this key combination.

4. Key combination (“Live” + “Camera Sequence Number”) will make this video device be displayed in focused grid.

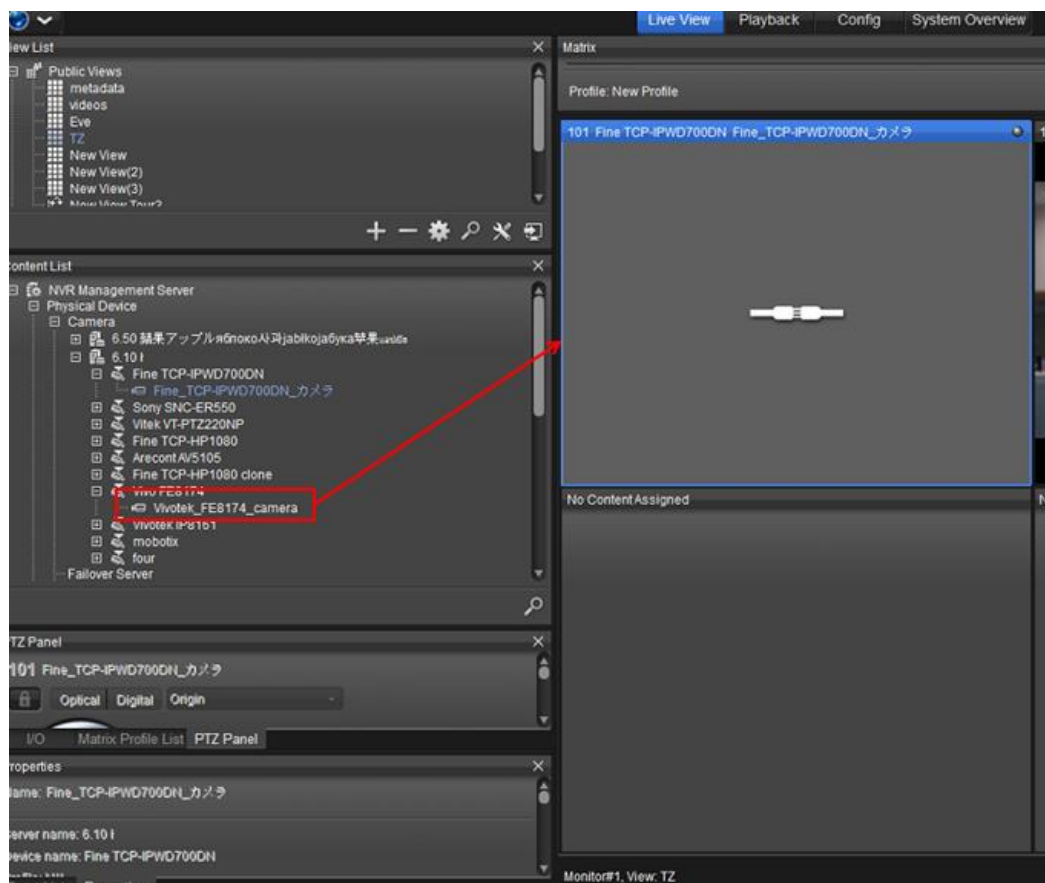
A "Camera Sequence Number" is implicitly assigned for each video device of all recording servers. "Camera Sequence Number" indicates the Nth camera in UI.

For example:

(3) indicates 3rd video device of 1st recording server.

(65) indicates 1st video device of 2nd recording server. (1st recording server contains 64 video devices)

(65) indicates 1st video device of 3rd recording server. (1st and 2nd recording server contains 32 video devices)



For example, the “Camera Sequence Number” of camera marked by a red square is (39), since it is the 7th camera of the 2nd recording server and 1st recording server contains 32 camera. The current focused “Grid” (101) is highlighted in blue.

Following 6 steps will make the chosen camera (39) be displayed in focused “Grid” (101):

- a) press key “Live”.
- b) press key “3” and release it.
- c) press key “9” and release it.
- d) press key “Live”.

This operation works on focused “Grid” is already occupied.

5. Key combination (“Preset” + “preset point number”) will invoke camera to go to the preset point. Following 3 steps will invoke camera of focus grid to go to the preset point 5:
  - a) press key “Preset”.
  - b) press key “5” and release it.
  - c) press key “Preset”.
6. Default key to specific operation in NuClient.

There is different from NUUO Crystal™ version 2.1.0, we don’t accept customize mapping key to special operation, the mapping is per-define as follow:

- a) “Monitor” + “number” indicates to focus the first grid of monitor.
- b) “7” indicates to change focus to previous one grid.
- c) “9” indicates to change focus to next one grid.
- d) “-PRES” indicates to change view to previous one.
- e) “+NEXT” indicates to change view to next one.

## Constraints

1. Functions, features, user interfaces and behaviors not described in this document are identical to those of NUUO Crystal™ official release version 2.1.0.